

AURUS

Atelier

Your personal

SENAT

Edition №2





Contents

1. Body colour palette
2. Interior textures and colours:
 - 2.1. Leather
 - 2.2. Veneer
 - 2.3 Carpet
3. Material combinations
4. Your personal AURUS
5. Specifications



The AURUS style is restrained elegance and functional design that always follows the engineering genius.

In the AURUS Atelier workshop, your car acquires its own special character. Show the world your personality with customized design elements.

You are holding in your hands the second edition of the AURUS Senat Atelier catalog with an expanded collection of colours and materials created to inspire you every day.

Immerse yourself in the atmosphere of luxury and create a unique style for your AURUS Senat!



1. Colour palette of the car body

The expanded colour palette includes many noble shades — from frosty white to cosmic black.

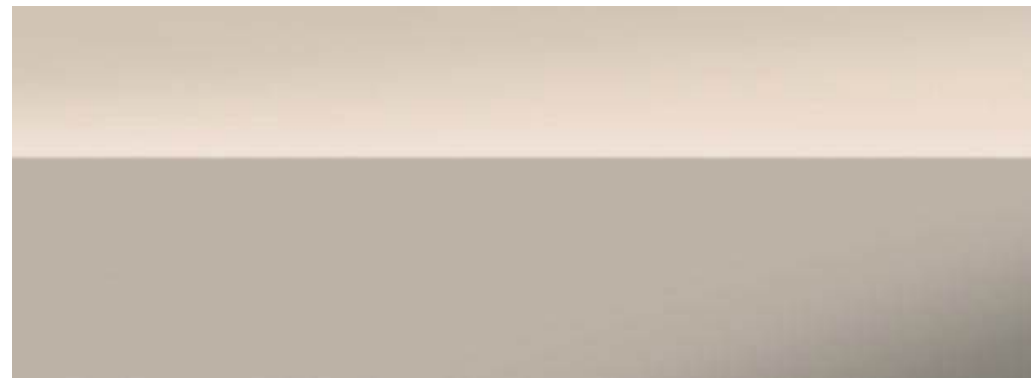
Lustre White



Porcelain



Latte Macchiato



Sunset Gold



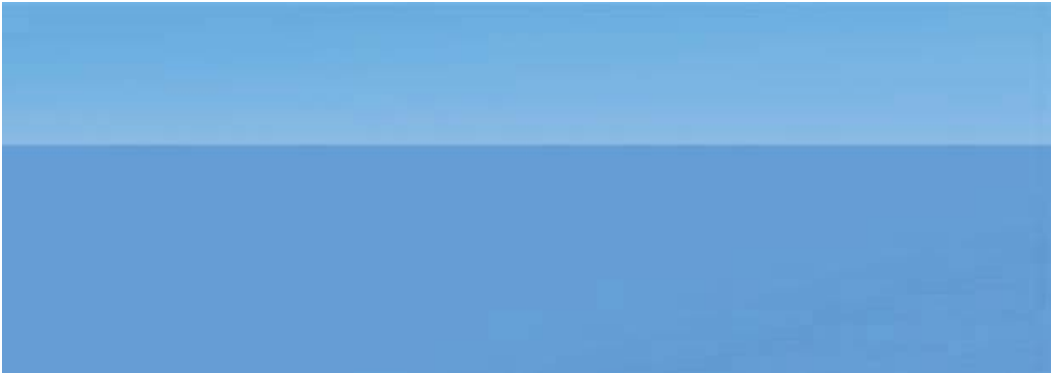
Desert Taupe



Russian Gold



Blue Magic



Silver Lining



Galant Grey



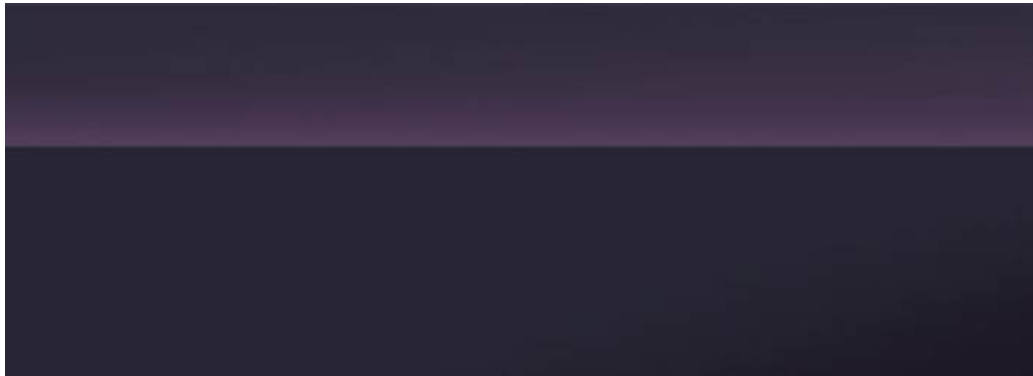
Desert Red



Velvet Ruby



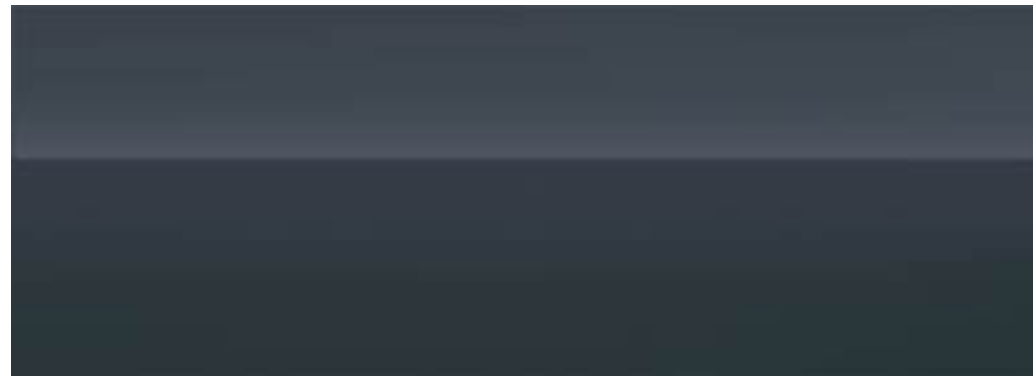
Shade of Night



Deep Forest



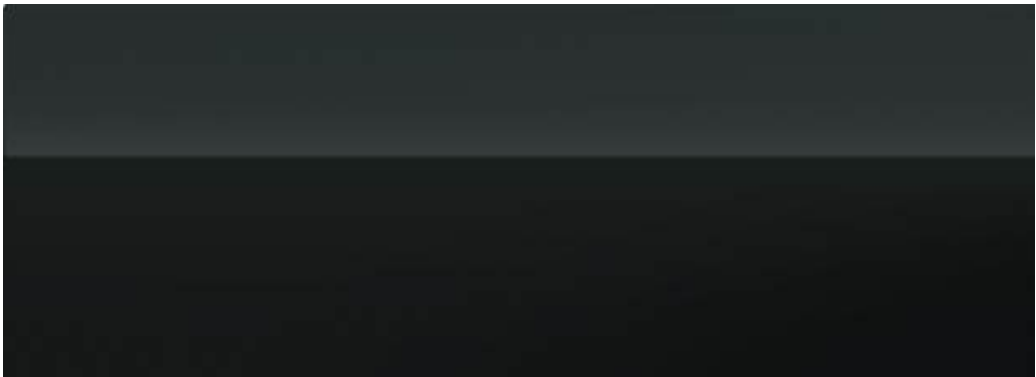
Graphite Trace



Pulsar Blue



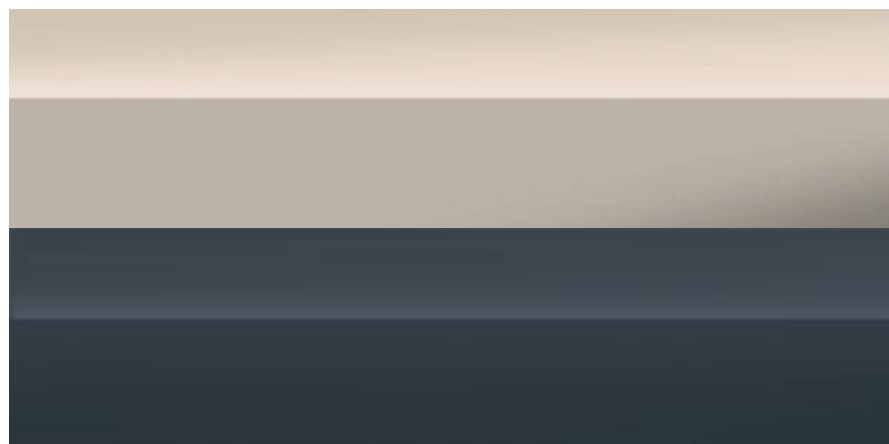
Universe Black



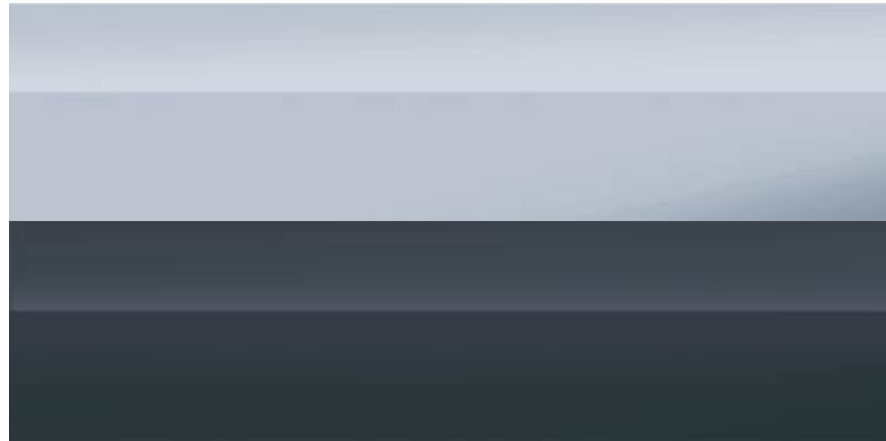
Latte Macchiato/Pulsar Blue



Latte Macchiato/Graphite Trace



Silver Lining/Graphite Trace



Pulsar Blue/Silver Lining





2. Textures and colours of the interior

Open the door of the AURUS Senat, run your hand over the polished wooden panels, touch the back of the seat. How do you feel? Warmth, coolness, texture, relief? Make your choice based on your feelings.

The AURUS interior collection features premium Russian—made materials: precious woods, genuine leather, velour, as well as high-tech automotive textiles.

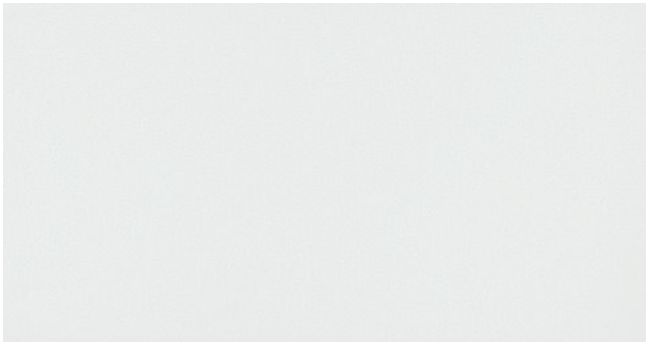


2.1. Leather

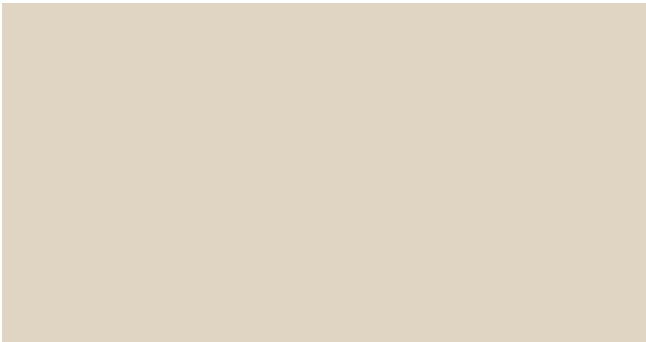
The collection includes Nappa interior leather and medium-grained Madras leather of Russian production. Unique colour solutions will perfectly complement the interior of your car.

INTERIOR LEATHER

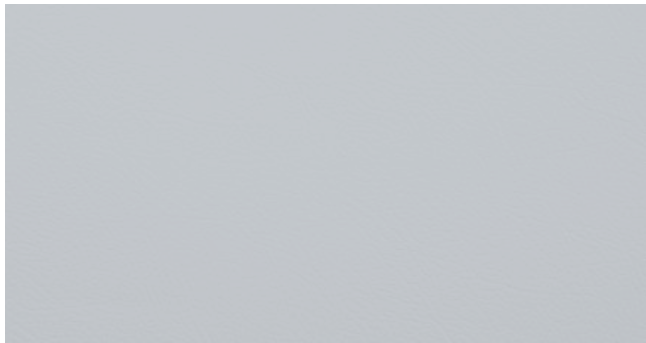
Seashell



Cashew Cream



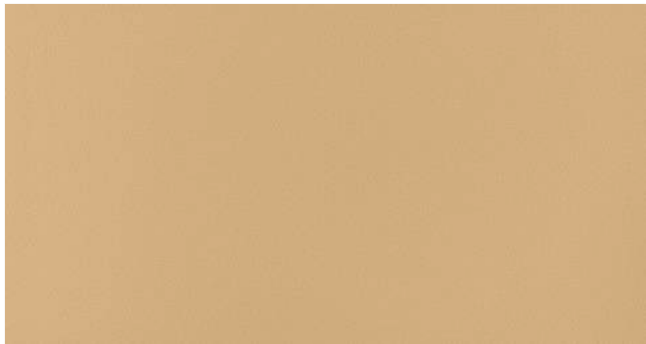
Arctic Grey



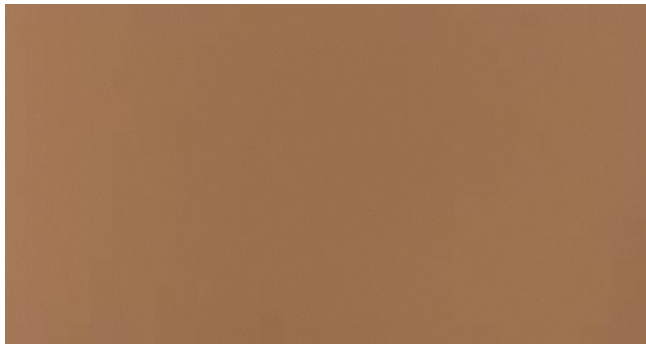
Nougat



Cashmere Beige



Karakum



INTERIOR LEATHER

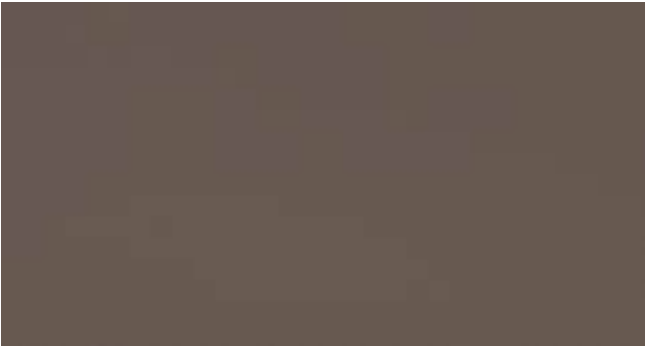
Sand Storm



Oatmeal



Nutmeg



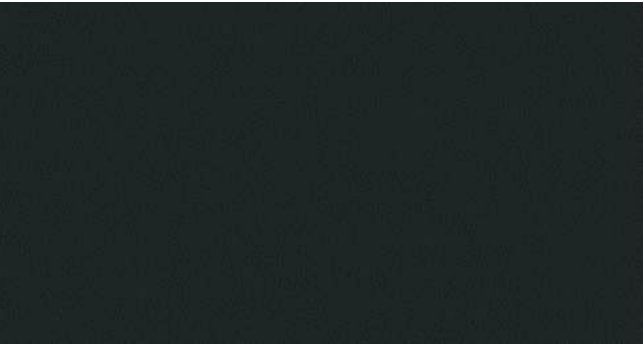
Anthracite



Dark Spice



Black





2.2. Veneer

The exquisite allure of polished open-pore wood, with its enchanting texture, unveils the inherent value of Russian timber – its sleekness, resilience, and mesmerizing pattern. In adorning the interior of AURUS, we meticulously uphold the majestic essence of wood, showcasing its unparalleled natural splendor in all its pristine glory.

Golden Poplar, open pore



Frosty Ash, open pore



Stained Ash, open pore



Dark Brown Ash, open pore



Stone Ash, glossy varnish



Charcoal Ash, open pore



Black Poplar, glossy varnish

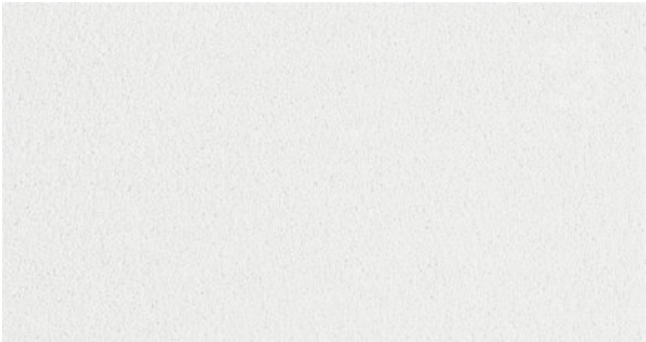




2.3. Carpet

The carpet, available in several elegant shades, will become a significant feature in the interior design. Exceptional quality and superb craftsmanship.

Seashell



Cashmere Beige



Arctic Grey



Nougat



Sand Storm



Oatmeal



Karakum



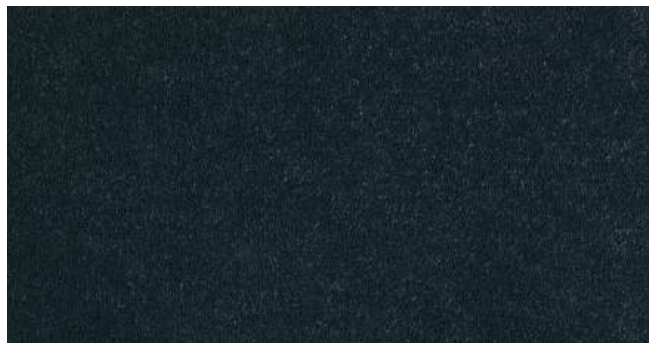
Nutmeg



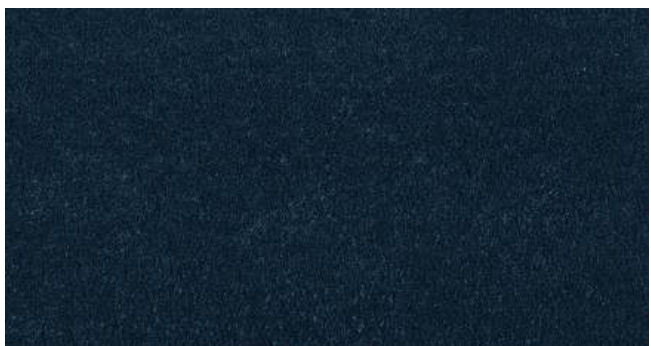
Dark Spice



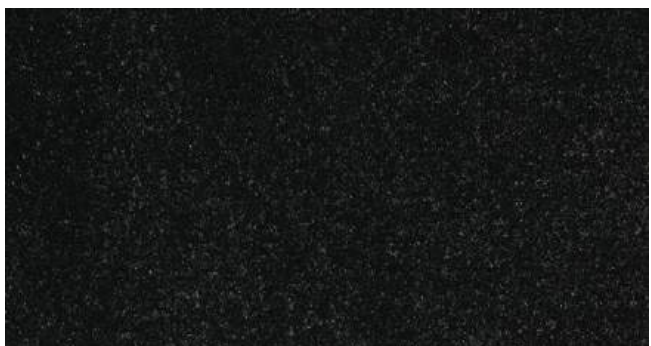
Anthracite



Caspian Blue



Black





3. Combining materials

Elevate your interior design by seamlessly blending an array of rich leather hues and textures. Whether you opt for a harmonious monochromatic palette or a striking mix of contrasting colours, the fusion of leather with sleek wood veneers creates a sophisticated and distinctive aesthetic. Harnessing the power of unique patterns and textures, this approach turns your interior into a bespoke masterpiece that reflects automotive design at its most luxurious.

Seashell



Leather: colour Seashell. Steering wheel leather: colour Black. Edge: light. Alcantara: light. Veneer: Black Poplar, glossy varnish. Carpet: black.

Seashell/Black/Alcantara Light



Leather: colour Seashell/Black. Steering wheel leather: colour Black. Edge: dark. Alcantara: light. Veneer: Black Poplar, glossy varnish. Carpet: black.

Seashell/Black/Alcantara Dark



Leather: colour Seashell/Black. Steering wheel leather: colour Black. Edge: dark. Alcantara: dark. Veneer: Stone Ash, glossy varnish. Carpet: black.

Seashell/Sand Storm/Alcantara Light



Leather: colour Seashell/Sand Storm. Steering wheel leather: colour light, with a black insert. Edge: colour Sand Storm. Alcantara: light. Veneer: Silver Birch Burl, matt varnish. Carpet: light.

Karakum



Leather: colour Karakum. Steering wheel leather: colour Black. Edge: colour Karakum. Alcantara: light. Veneer: Black Poplar, glossy varnish. Carpet: black.

Karakum/Cashmere Beige/Alcantara Light



Leather: colour Karakum/Cashmere Beige. Steering wheel leather: colour Cashmere Beige with a black insert. Edge: colour Karakum. Alcantara: light. Veneer: Silver Birch Burl, matt varnish. Carpet: light.

Karakum/Black/Alcantara Dark



Leather: colour Karakum/Black. Steering wheel leather: colour Black. Edge: colour Karakum. Alcantara: dark. Veneer: Charcoal Ash, open pore. Carpet: black.

Dark Spice



Leather: colour Dark Spice. Steering wheel leather: colour Black. Edge: colour Arctic Grey. Alcantara: light. Veneer: Black Poplar, glossy varnish. Carpet: dark.

Dark Spice/Nutmeg/Alcantara Light



Leather: colour Dark Spice/Nutmeg. Steering wheel leather: colour Black. Edge: dark. Alcantara: light. Veneer: Golden Poplar, open pore. Carpet: dark.

Dark Spice/Nougat/Alcantara Light



Leather: colour Dark Spice/Nougat. Steering wheel leather: colour Black. Edge: dark. Alcantara: light. Veneer: Dark Brown Ash, open pore. Carpet: dark.

Dark Spice/Nougat/Alcantara Dark



Leather: colour Dark Spice/Nougat. Steering wheel leather: colour Black. Edge: dark. Alcantara: dark. Veneer: Charcoal Ash, open pore. Carpet: dark.

Cashmere Beige



Leather: colour Seashell. Steering wheel leather: colour Black. Edge: light. Alcantara: light. Veneer: Black Poplar, glossy varnish. Carpet: black.

Cashmere Beige/Cashew Cream/Alcantara Light



Leather: colour Cashmere Beige/Cashew Cream. Steering wheel leather: colour is light with a black insert. Edge: light. Alcantara: light. Veneer: Silver Birch Burl, matt varnish. Carpet: light.

Cashmere Beige/Antracite/Alcantara Dark+Light



Leather: colour Cashmere Beige/Antracite. Steering wheel leather: colour Black. Edge: light. Alcantara: combined.
Veneer: Charcoal Ash, open pore. Carpet: dark.

Black



Leather: colour Black. Steering wheel leather: colour Black. Edge: dark. Alcantara: light. Veneer: Black Poplar, glossy varnish. Carpet: black.



4. Your Personal AURUS

AURUS Atelier offers the opportunity to personalize the interior of your car with unique features. Possible personalization options include engraving on the car's thresholds, embroidered or embossed leather seats, and other customizations.

5. Specifications



Dimensions		Engine	
Length	5632 mm	Engine	V8 Twin-turbo
Width	2020 mm	Displacement	4400 cm ³
Height	1689 mm	Engine type	Hybrid
Wheelbase	3300 mm	Power	598 hp
Ground clearance	200 mm	Electric motor power	62 hp
Weight		Torque	880 Nm / 2200-4750 rpm
Maximum weight	3490 kg	Maximum speed	250 km/h
Curb weight	3235 kg	Acceleration (0-100 km/h)	6 sec
		Transmission	
		Gearbox	AT9
		Drive type	AWD

All images, text descriptions, and other materials presented in this catalog is for information purposes only. The versions of this catalog may differ from each other, depending of the region of distribution. All information regarding the products presented in the catalog is indicative. AURUS LLC reserves the right to change colors, materials, specifications, and models of the products presented; and amend the catalog at any time, without any prior notice. Individual customers and organizations may request up-to-date product information and catalog content from AURUS LLC's Sales Department or AURUS official dealers. Images, text pieces, and other materials presented in this catalog may constitute intellectual property or equal means of identification that are protected by Russian law ("Intellectual Property"). Titles, logos, text and graphic elements, or equal means of identification, presented

in this catalog, constitute intellectual property and are owned by AURUS LLC and/or NAMI ("Copyright Holders"). It is prohibited to copy, reproduce, or use any titles, logos, text and graphic elements, presented in this catalog, for any public or commercial purposes, without a prior written consent of the Copyright Holders. This catalog, including all its parts, may not grant any rights of licenses allowing the use of the Intellectual Property of the Copyright Holders or third parties. Any illicit, unauthorized use of the materials presented in this catalog may be regarded as a violation of the intellectual property right, entailing liability under applicable Russian law.

© Copyright AURUS LLC, 2024.

AURUS

Atelier

Your personal

SENAT

We are turning a new page in the history of luxury cars
and setting new standards of quality and comfort that will
become part of our legacy.



aurusmotors.com